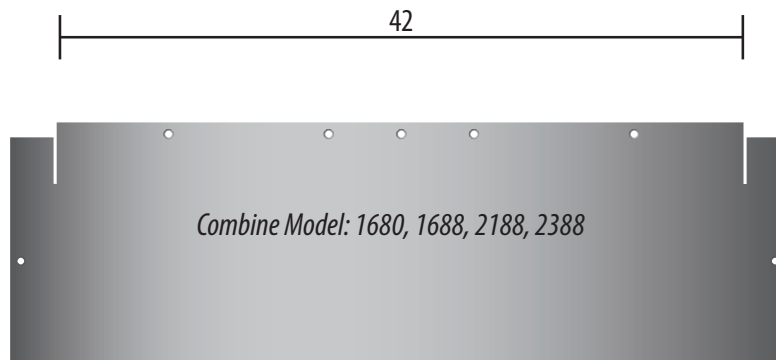
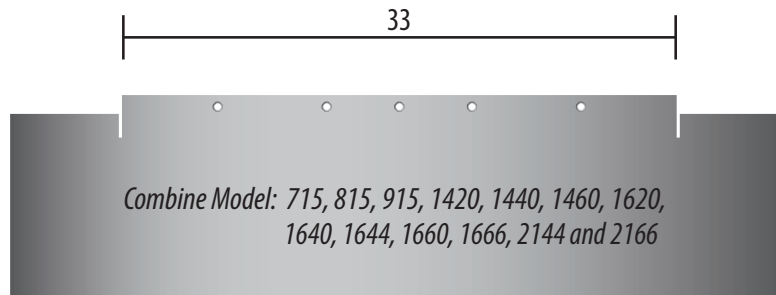


PLEASE READ THE ENTIRE INSTRUCTION SHEET BEFORE STARTING INSTALLATION.

PLEASE REFER TO THE OPERATORS MANUAL FOR YOUR SPECIFIC COMBINE FOR PERTINENT SAFETY PRECAUTIONS THE TERMS. "LEFT", "RIGHT", "FRONT", & "REAR" ARE DETERMINED BY FACING IN THE DIRECTION THE COMBINE WILL TRAVEL WHEN IN USE.

IMPORTANT:

Before you begin installation, compare the contents with the enclosed "Packing Slip" to confirm that you have received the correct panels and associated hardware for your model header. Please refer to the operators manual for your specific combine for pertinent safety precautions. Also confirm that you have received the correct center panel for your feeder opening and/or model combine as illustrated below.

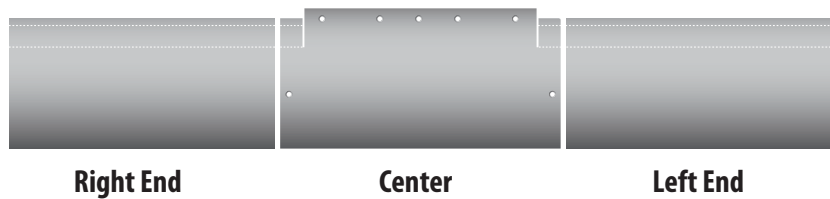


Forward

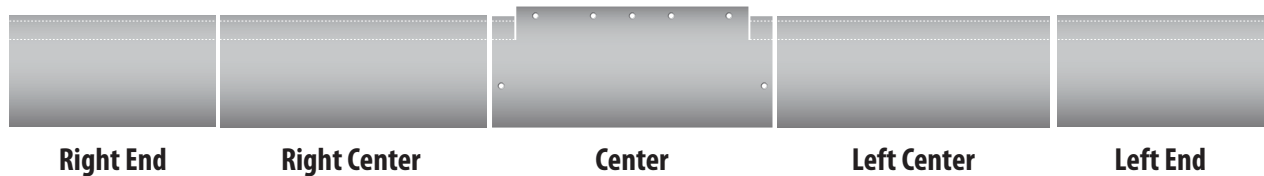


Visit us online at www.lundellplastics.com to see other innovative products! Online ordering NOW AVAILABLE!

3 PANEL KIT LAYOUT

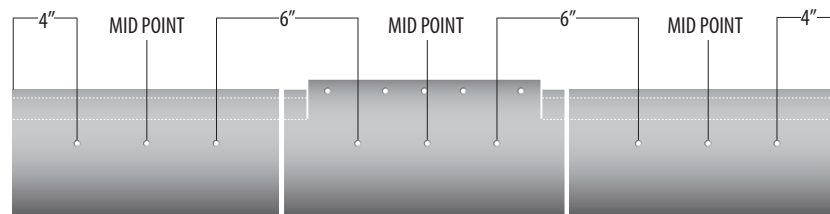


5 PANEL KIT LAYOUT

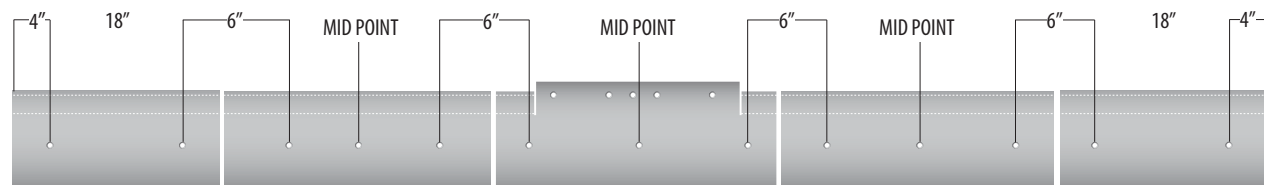


RECOMMENDED HOLE LOCATION

3 PANEL KIT

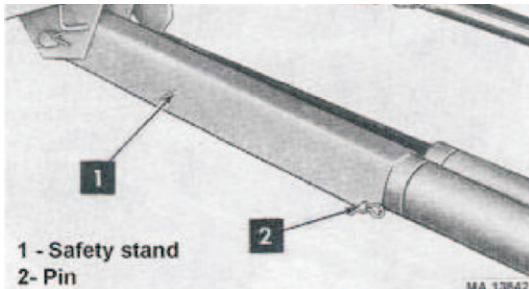


5 PANEL KIT



Visit us online at www.lundellplastics.com to see other innovative products! Online ordering NOW AVAILABLE!

© Lundell Plastics Corporation · 400 W Market St. · Odebolt, IA 51458 · P 712.668.2400 · TF 877.367.7659 · F 712.668.2402



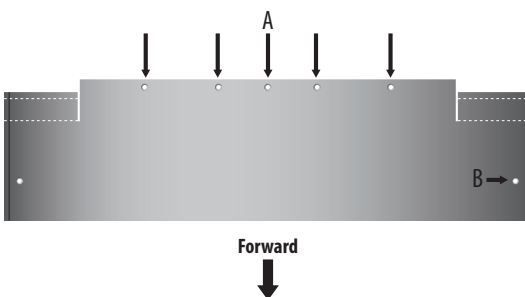
With the corn head connected to the combine, raise the feeder house to maximum height and engage the feeder safety lock.

Combine Feeder Safety Lock: Shown below for reference only. See your operator's manual for specifics on your machine

- Raise feeder to maximum up position and lower safety stop over the piston rod of the header lift cylinder and pin in place.
- Then lower feeder to lock stop in place. **Do not rely on the hydraulic system for support.**



1. Clean the metal trough to remove all dirt and crop residue. Remove all patches; repairs or added bolts that would restrict the poly covers from laying flat against the top surface of the metal trough. The poly covers can be installed over heavily worn metal and over holes in the metal plates if the holes do not exceed 3 inches in width (front to back) and are less than 18 inches in length (left to right).

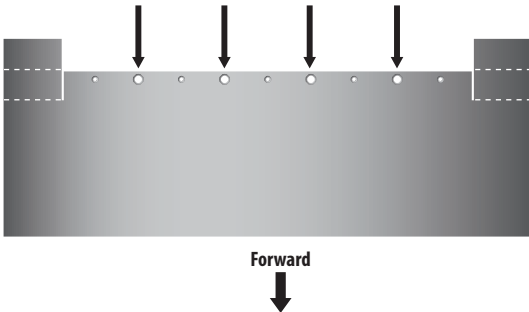


2. **A.** Remove the factory bolts (5 each for the 33" opening and 7 each for the 42" opening) along the rear edge of the feeder opening.
B. Remove the two outer factory bolts which correspond to the outer slots in the poly center panel.



3. Insert the poly center panel under the auger as illustrated. **IT IS VERY IMPORTANT TO PUSH THE POLY PANEL REARWARD UNTIL THE REAR EDGE OF THE POLY MAKES CONTACT WITH THE STRIPPER ANGLE AND THE FRONT EDGE "SNAPS" BEHIND AND BELOW THE FRONT STEEL RAIL OF THE HEADER.** It may be necessary to use a block of wood to drive the panel into position as illustrated. *NOTE: If necessary, raise the auger to maximum height. Readjust auger to desired height after installation is complete.*

Visit us online at www.lundellplastics.com to see other innovative products! Online ordering NOW AVAILABLE!



4. Align poly center panel with the holes in the metal and replace the bolts removed in Step 2 with the $\frac{1}{4}$ "-20 x 1 $\frac{1}{4}$ " fanged elevator bolts as illustrated below. *Loosely install all bolts. Tighten the two outer bolts first, and then tighten the rear bolts.*

IMPORTANT: TIGHTEN THE NUT TO SEAT THE HEAD OF THE BOLT THEN LOOSEN THE NUT $\frac{3}{4}$ TURN. THIS WILL ALLOW THE LINER TO EXPAND AND CONTRACT WITH TEMPERATURE CHANGE

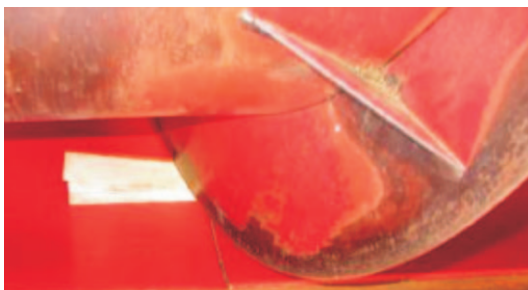


5. Using the two pre-drilled holes as a guide, drill thru the floor of the header with the $\frac{3}{8}$ " drill bit supplied. Install the additional $\frac{1}{4}$ -20 x 1 $\frac{1}{4}$ " elevator bolts.

When using power tools, basic safety precautions should always followed to reduce the risk of personal injury. **WEAR SAFETY GLASSES OR GOGGLES.**



6. Insert the left and right panels under the auger as in Step 3.
7. Using the $\frac{3}{16}$ " plastic block as a gauge and working from the center outward, position the end panels so that there is a $\frac{3}{16}$ " gap at each joint.



8. Wedge the panels tight against the bottom of the trough with the wooden shims supplied.

Visit us online at www.lundellplastics.com to see other innovative products! Online ordering NOW AVAILABLE!



9. Drilling upward from underneath the header, use the 3/8" drill bit to drill thru the metal trough and poly cover as illustrated. Drill the holes in line with the outer holes of the center panel as illustrated. (Approximately 7" from the rear of the trough). Install and tighten a 1/4"-20 x 1 1/4" Fanged bolt in each hole before drilling the next hole. **IMPORTANT: TIGHTEN THE NUT TO SEAT THE HEAD OF THE BOLT THEN LOOSEN THE NUT 3/4 TURN. THIS WILL ALLOW THE LINER TO EXPAND AND CONTRACT WITH TEMPERATURE CHANGE.**



10. To complete the installation, drill a 3/8" hole at each row. Drill 3 1/2" – 4" left of the center of the row unit for all rows that are left of the center line of the header and 3 1/2" – 4" right of the center of the row unit for all rows that are right of the center line of the header. Confirm that this offset is correct to miss the gear box and clutch assembly on the underside. Drill from the topside downward.



11. Locate the hole approximately 3/4" from the front edge. Secure with 1/4"-20 x 3/4" truss head bolt. **IMPORTANT: TIGHTEN THE NUT TO SEAT THE HEAD OF THE BOLT THEN LOOSEN THE NUT 3/4 TURN. THIS WILL ALLOW THE LINER TO EXPAND AND CONTRACT WITH TEMPERATURE CHANGE.**

WARNING Proper application, installation, and operation of any machine and/or installation incorporating products sold by Lundell Plastics Corporation™ is the responsibility of the purchaser and/or end user. All local, state, and federal safety codes must be followed. Lundell Plastics Corporation™ is specifically not responsible for property damage and/or personal injury, direct or indirect, for damages and/or failures caused by improper design, application, installation, operation, abuse, and/or misuse of its' products. Conveyors must never be installed, readied for operation, or operated without proper covers and guards installed and securely in place.

Visit us online at www.lundellplastics.com to see other innovative products! Online ordering NOW AVAILABLE!

© Lundell Plastics Corporation · 400 W Market St. · Odebolt, IA 51458 · P 712.668.2400 · TF 877.367.7659 · F 712.668.2402